

# 零件手册

## 悬浮式洗脱机 60 公斤

Part Manual for

Soft-mount Washer-Extractor

60kg

**OASIS**®

济南绿洲清洗设备有限公

Jinan Oasis Dry-cleaning & Laundry Equipment Co., Ltd

编号/Number: SL60CNEN

发布日期/Release Date: 2024/12

## 前言

- ✧ 在更换设备零部件的时候，必须使用原装的或完全相同的零件。在保养或者替换零件以后，请按照机器原来的方式紧固所有的面板部件，并且将本手册存放在安全的地方，以便日后参考。
- ✧ 当与经销商或者生产商联系的时候，请告知机器的确切类型、型号和序列号。机器的类型、型号和序列号在机器的铭牌上可以找到。
- ✧ 生产商有在任何时候修改本手册中任何参数，而不提前通知的权力。本手册所提及的数据参数和图示仅做参考。请注意，本手册只能提供一般的信息，因为本手册不可能非常完整的包含机器一切的信息。

## Preface

- ✧ When replacing dryer spare parts, original or identical parts must be used. After maintenance or replacing parts, please tighten all parts as they were originally on the dryer, and store this manual in a safe place for future reference.
- ✧ When contacting the dealer or manufacturer, please provide the exact type, model, and serial number of the dryer. The type, model, and serial number of the dryer can be found on the nameplate.
- ✧ The manufacturer reserves the right to modify any parameters in this manual at any time without prior notice. The data and illustrations mentioned in this manual are for reference only. Please note that this manual can only provide general information, as it is not possible for this manual to include all details about the machine.

**本手册适用于一下型号**

**This manual for following models**

SXT600F\*Q

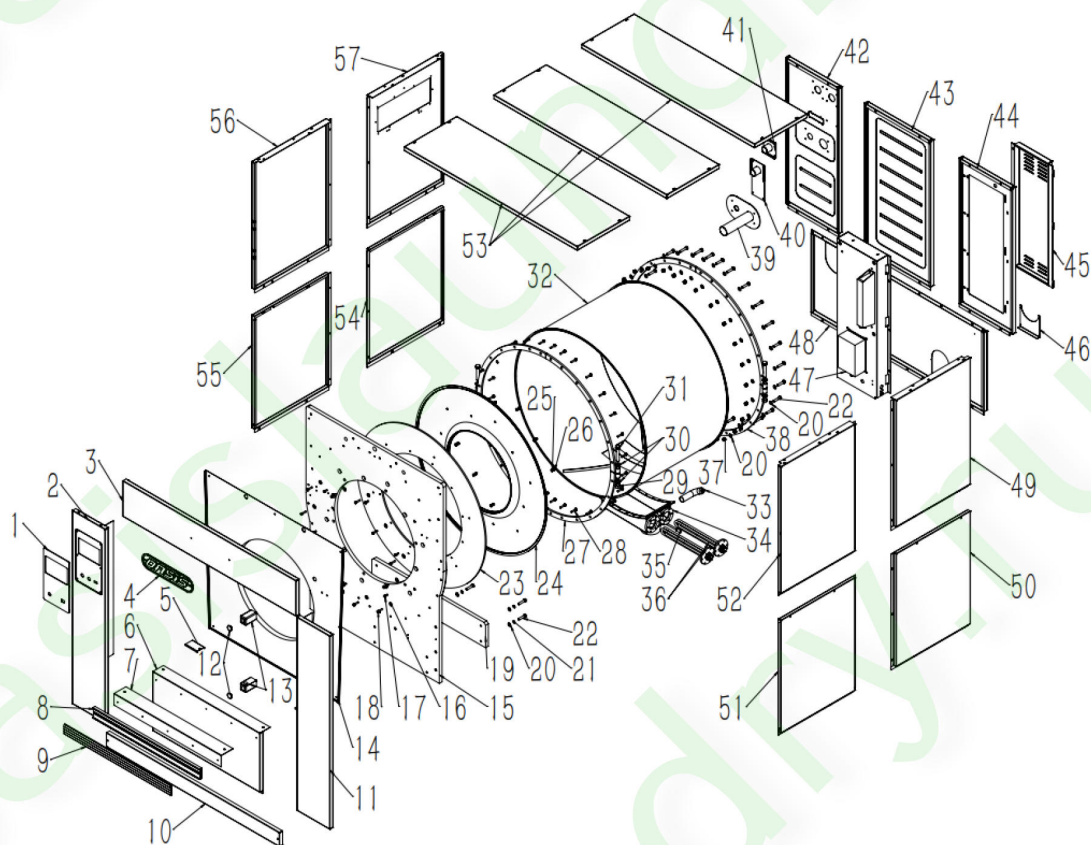
\*代表加热方式 Heating:

D=电热 Electric; Z=蒸汽 Steam;

## 目录 Index

面板及滚筒组件/Panels and Drum Assembly-----	3
机架组件/Frame Assembly-----	6
内滚筒及主轴传动组件/Inner Drum and Shaft Drive Assembly-----	8
装载门组件/Loading Door Assembly-----	10
传动电机/Drive Motor-----	12
进水及蒸汽管路/Water Inlet and Steam Inlet-----	13
电器箱/Electrical Box-----	15
零件订购/Part Ordering-----	17
声明/Statement-----	17

## 面板及滚筒组件/Panels and Drum Assembly



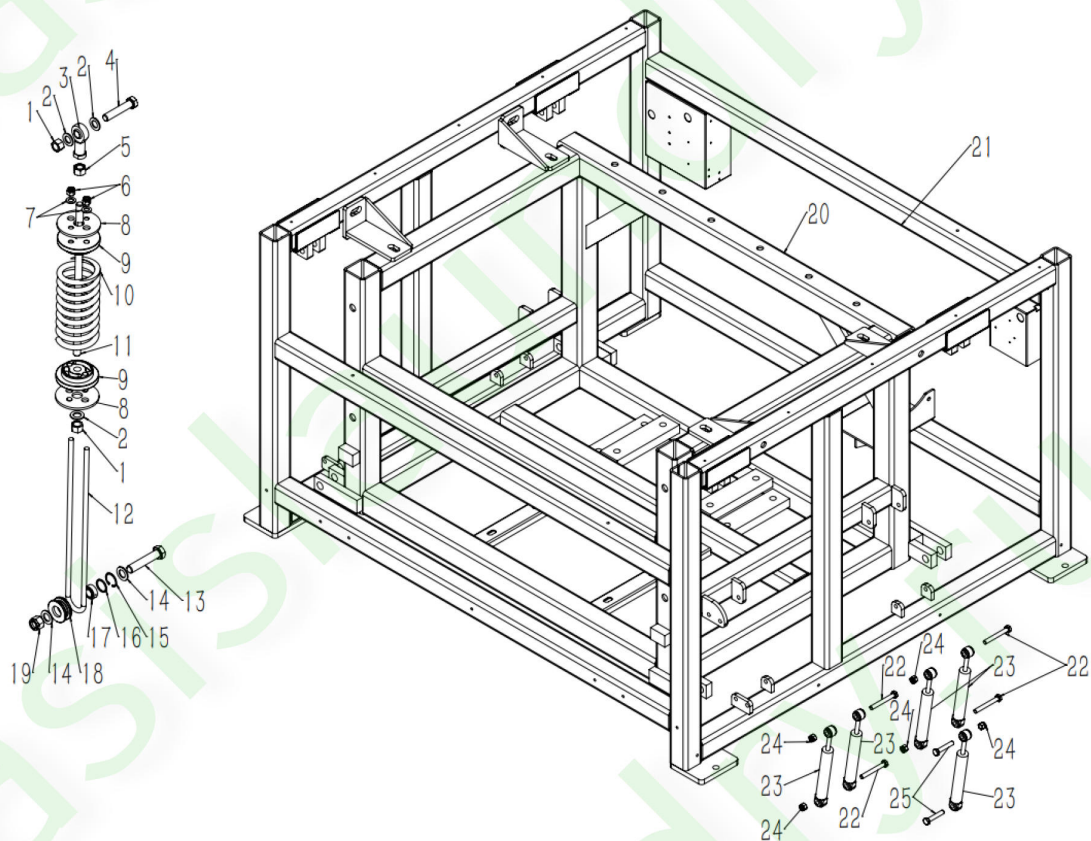
序号 No	零件编码 Part No	Part Name
1	SX1000044	Operation Panel Mounting Plate
2	SX600019	Front Left Column
3	SX600023	Panel
5	SX600029	Cover plate
6	SX600022	Front Lower Panel
8	SX600051	Bumper Beam
9	YXJ0319	Bumper Strip
10	SX600030	Front Lower Guard Panel
11	SX600020	Front Right Column R



12	SXJ0043	Hinge Base Plug T
13	S60030	Hinge Mounting Base
14	SX600016	Inner Liner Plate
15	HJCX00290	Front Panel Welding
16	BL0052	Flat Washer
17	BL0018	Socket Head Cap Screw
18	BL0021	Socket Head Cap Screw
19	SX600049	Counterweight
20	BL0051	Flat Washer
21	BL0313	Spring Washer
22	BL0075	Hexagon Bolt
23	SX600050	Front Cover
24	S60049	Front Liner Plate
25	BL0052	Flat Washer
26	BL0391	Locking Nut
27	HJCX00222	Outer Tub Flange Welding
28	BL0117	Hexagon Bolt
29	BL0146	Locking Nut
30	BL0048	Flat Washer
31	BL0340	Hexagon BoltM16×100
32	HJCX00099	Outer Tub Welding
33	SXJ0008	Liquid Level Tube
34	S60061	Drain Pan Welding
35	TD0044	Probe Holder
36	A0022	Heating Element SX
37	BL0149	Locking Nut
38	BL0051	Flat Washer
39	HJCX00222	Outer Tub Flange Welding
40	BL0051	Flat Washer
41	BL0075	Hexagon Bolt
42	SX600045	Air Balance Mounting Plate Welding
43	SX600046	Cold Water Inlet Mounting Plate Welding
44	SX600047	Hot Water Inlet Mounting Plate Welding
45	SX600017	Rear Right Panel
46	SX600018	Rear Middle Panel
47	SX600021	Rear Left Panel

48	SX600033	Electrical Box Cover
49	SX600032	Rear Lower Patch Panel
50	SX600042	Electrical Box Welding
51	SX600031	Rear Lower Panel
52	SX600026	Rear Lateral Upper Panel
53	SX600028	Rear Lateral Lower Panel
54	SX600043	Front Lateral Lower Panel
55	SX600044	Front Lateral Upper Panel
56	SX600034	Top Cover
57	SX600028	Rear Lateral Lower Panel
58	SX600043	Front Lateral Lower Panel
59	SX600044	Front Lateral Upper Panel
60	SX600026	Rear Lateral Upper Panel

## 机架组件/Frame Assembly

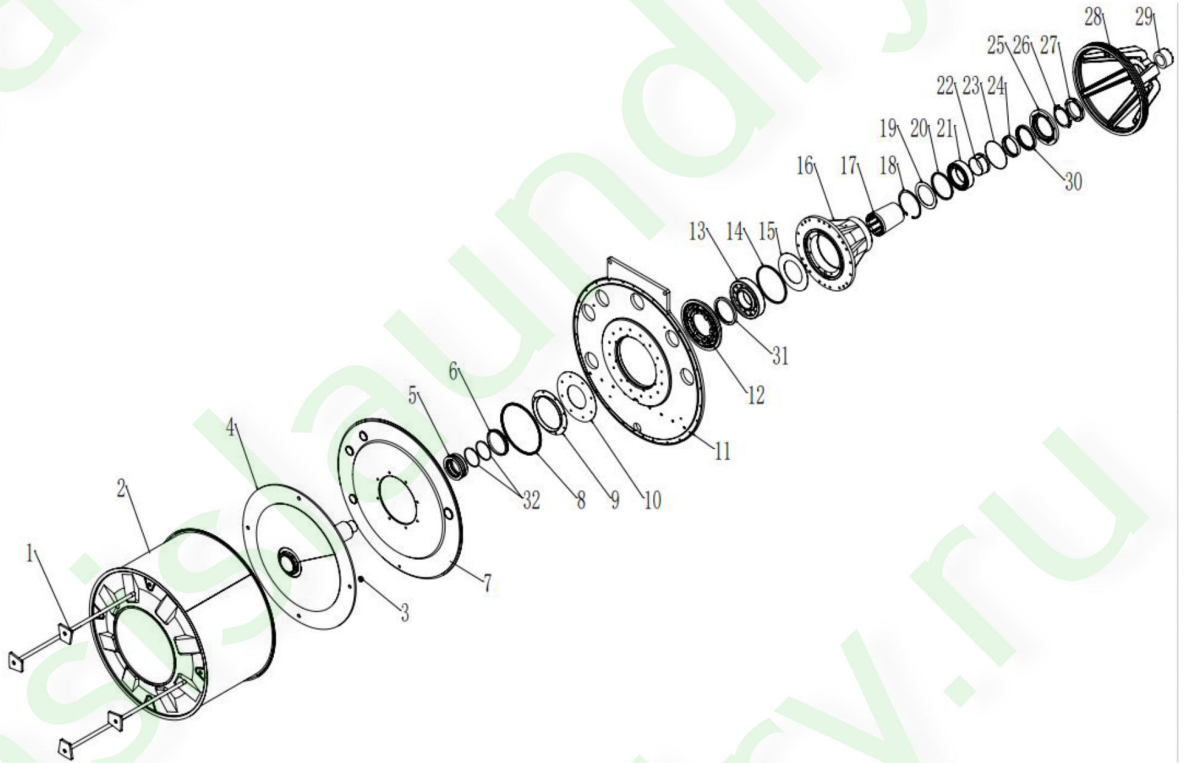


序号 No	零件编码 Part No	Part Name
1	BL0007	Nut
2	BL0047	Flat Washer
3	WC0017	Joint Bearing
4	BL0047	Flat Washer
5	BL0095	Hexagon Bolt
6	BL0342	Fine Thread Thin Nut
7	BL0149	Locking Nut
8	BL0051	Flat Washer
9&14	S60037	Spring Mounting Plate
10&13	S60006	Spring Mounting Plate
11	TW0189	SX60 Spring
12	S60006	Central Adjusting Bolt

15	BL0047	Flat Washer
16	BL0007	Nut
17	S60006	U Shaped Bolt
18	BL0059	Hexagon Bolt
19	BL0049	Flat Washer
20	TW0068	GB Retaining Ring
21	S60010	Bearing Spacer (small)
22	WC0017	Joint Bearing
23	S60009	Groove Wheel
24	BL0049	Flat Washer
25	BL0150	Locking Nut
26	HJXC0014 5	Outer Tub Bracket Assembly Welding
27	HJXC0013 4	Frame Welding
28	BL0089	Hexagon Bolt
29	TW0072	Shock Absorber
30	BL0144	Locking Nut
31	BL0349	Hexagon Bolt



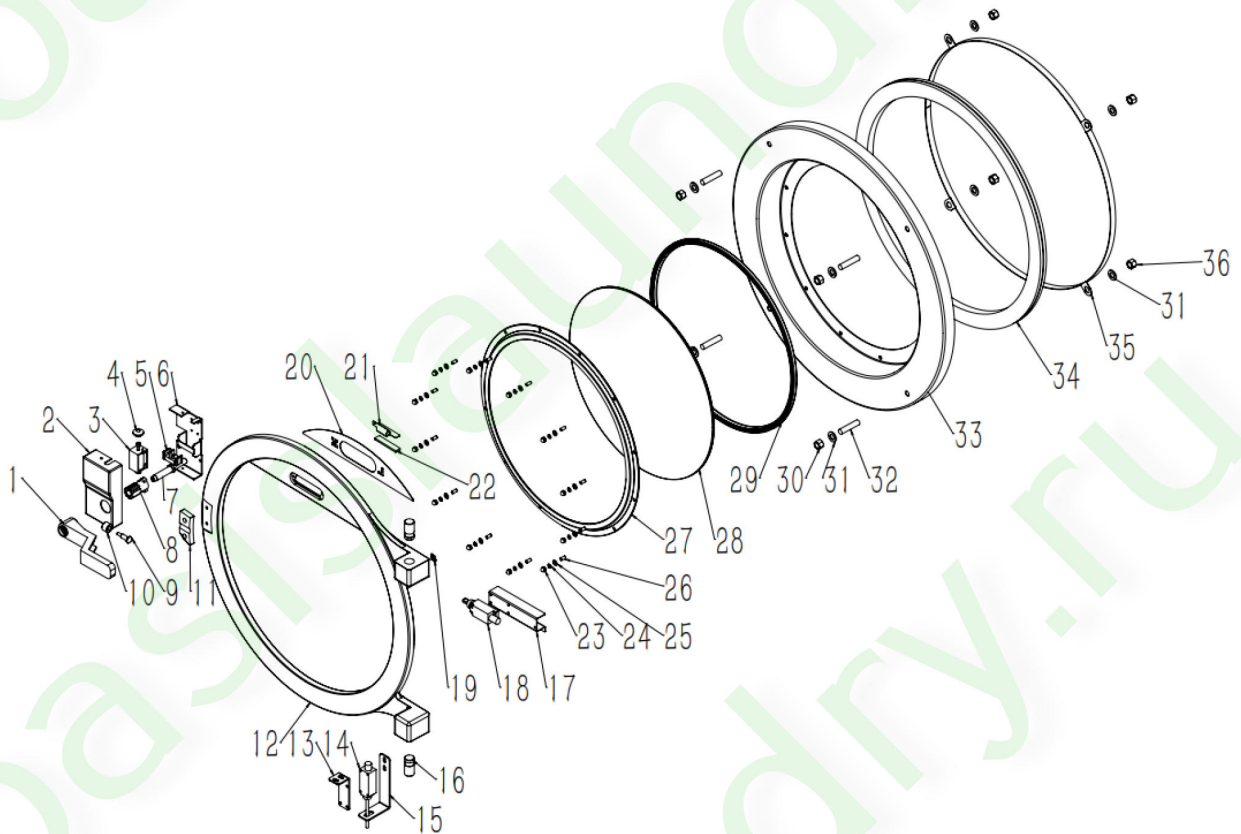
## 内滚筒及主轴传动组件/Inner Drum and Shaft Drive Assembly



序号 No	零件编码 Part No	Part Name
1	S60025	Tension Rod Welding
2&4	HJCX00119	Inner Drum Component
3	BL0322	Nut
5	S60019	Oil Seal Bushing
6	XY0010	FKM Water Seal
7	HJCX00099	Rear Cover Welding
8	YXJ0201	Nitrile Rubber Strip
9	S60016	End Face Oil Seal Dust Shield
10	SX600003	End Face Sealing Plate
11	HJCX00071	Rear Panel Welding
12	S60012	Front Cover

13	WC0036	Bearing
14	S60021	Front Spacer Ring
15	SX600005	Front Oil Shield
16	S60011	Bearing House
17	S60013	Spacer Sleeve
18	TW0079	GB Retaining Ring
19	SX600004	Rear Oil Shield
20	S60017	Rear Spacer Ring
21	WC0016	Bearing
22	TW0078	Withdraw Sleeve
23	GX00006	Nitrile O-Ring
24	S60018	Rear Oil Seal Bushing
25	S60014	Rear cover
26	TW0085	Round Nut Locking Washer
27	TW0080	GB Round Nut
28	S60020	Spindle Pulley
29	TW0110	Expansion Sleeve
30	XY0011	Metal-Cased Oil Seal 150-180
31	XY0007	Metal-Cased Oil Seal 170-200
32	SX00010	O-Ring 133

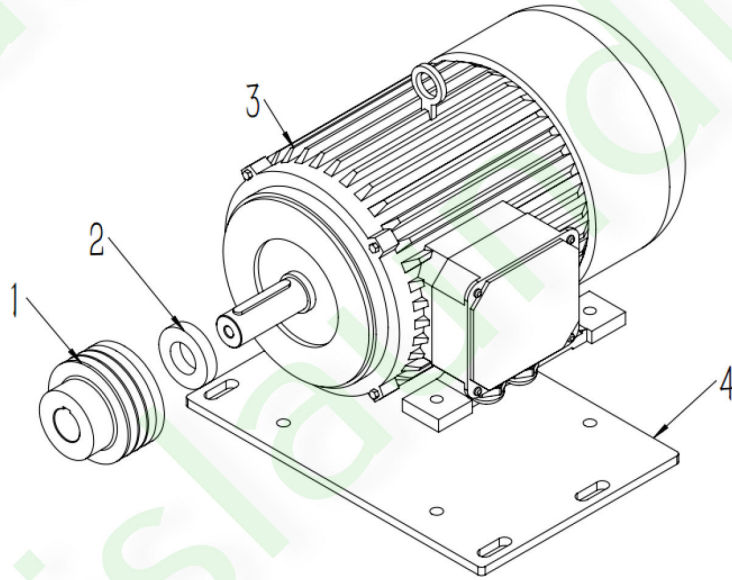
## 装载门组件/Loading Door Assembly



序号 No	零件编码 Part No	Part Name
1	ZS0094	Door Handle
2	S0034	Lock Cover
3	TW0208	Magnet
4	S250055	Door Pin Handle
5	S250010	Aluminum Base
6	S250057	Door Lock Base Welding 304
7	S60036	Handle Shaft
8	S250004	Ratchet
9	S250008	Pressure Wheel Shaft
10	S250009	Pressure Wheel

11	S0069	Spacer Block
12	S60026	Aluminum Pressure Ring
13	SX600009	Vibration Switch Bracket
14	TD0103	Limit Switch
15	SX600010	Vibration Limit Bracket
16	S60032	Door Shaft
17	SX600007	Limit Switch Bracket
18	TD0102	Limit Switch
19	SX600048	Wiring Closed Terminal
22	TD0274	LED Light 8KG SX
23	BL0186	304Cap Nut
24	BL0312	Spring Washer
25	BL0046	Flat Washer
27	S60029	Glass Pressure Ring
28	TW0163	Tempered Glass
29	SXJ0007	60KG Glass Wrapping Ring
30	BL0319	Nut
31	BL0319	Nut
32	BL0075	Hexagon Bolt
33	S60028	Pressed Door Ring
34	SXJ0082	60KG Washer Door Gasket G
35	HJCX0746	Rubber Strip Wrapping Ring Welding
36	BL0051	Flat Washer

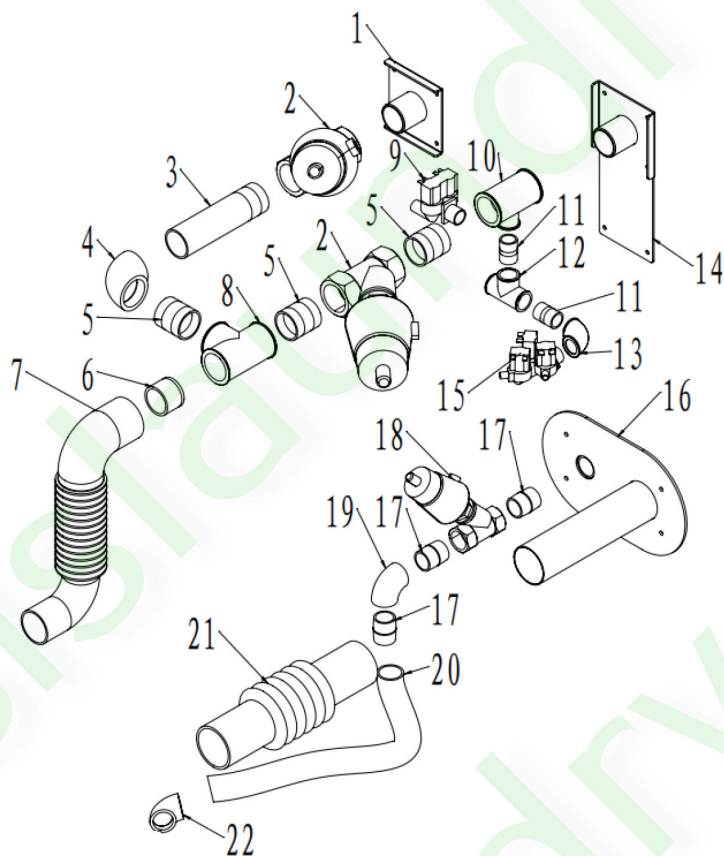
## 传动电机/Drive Motor



序号 No	零件编码 Part No	Part Name
1	S60039	Belt Pulley
2	S60040	Motor Pulley Spacer
3	SDJ0046	Motor
4	S60062	Motor Steel Plate



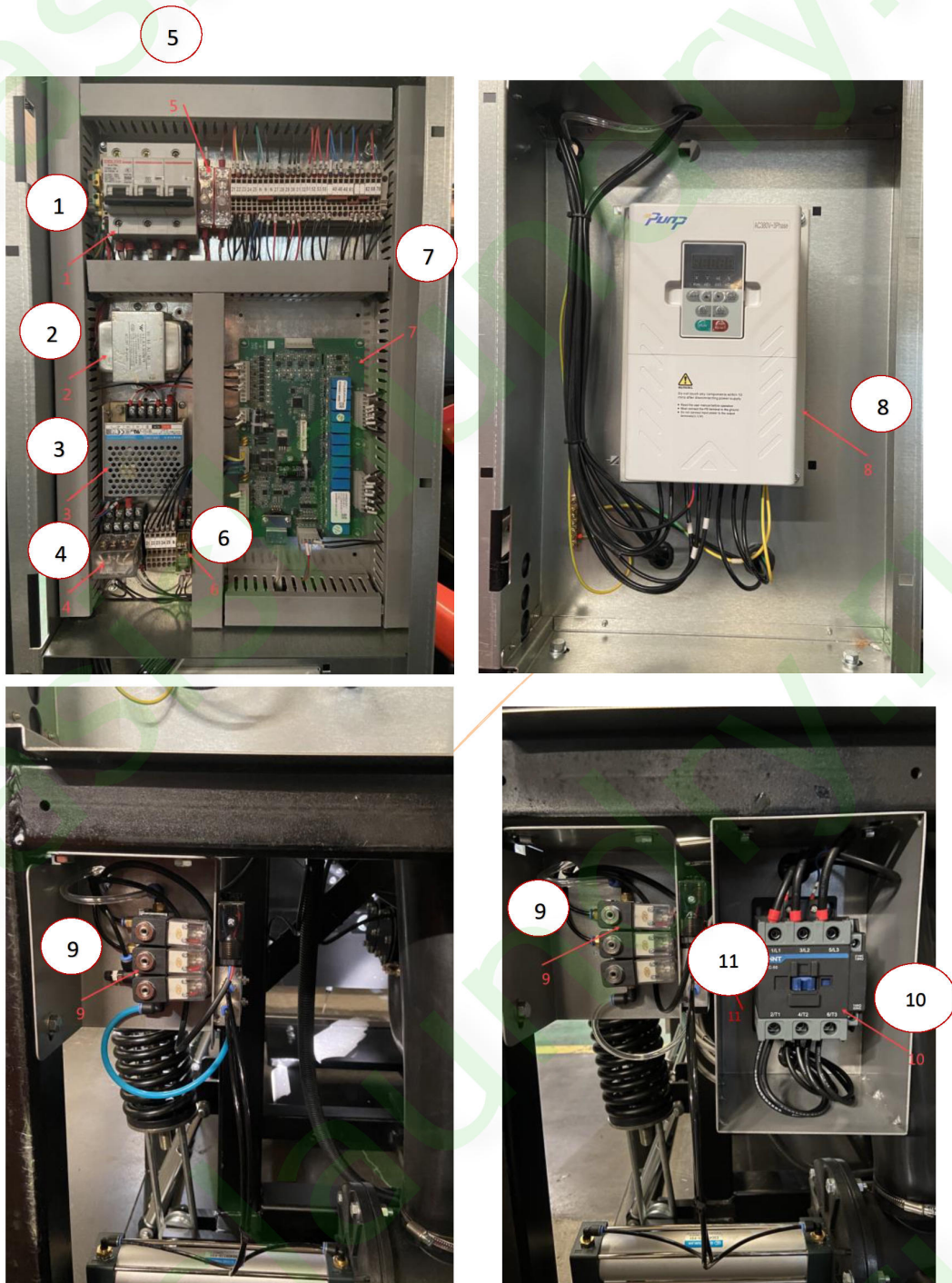
## 进水及蒸汽管路/Water Inlet and Steam Inlet



序号 No	零件编 Part No	Part Name
1	SX600047	Hot Water Inlet Mounting Plate
2	GQ0050	1.5" Pneumatic Valve
3	TNS0061	1.5" Barrel Nipple Length 170
4	GWG0003	1.5" Internal Threaded Elbow
5	S40030	1.5" Barrel Nipple Length 50
6	S40032	Welding Nipple
7	SXJ0014	Water Inlet Hose
8	GWG0027	Pipe Tee 1
9	WF0027	Double Solenoid Inlet Valve
10	GWG0130	Reducing Tee

11	DXG001	Barrel Nipple
12	GWG0001	Pipe Tee 2
13	GWG0005	Elbow
14	SX600046	Cold Water Inlet Mounting Plate Welding
15	WF0028	Triple Solenoid Inlet Valve
16	SX600045	Air Balance Mounting Plate Welding
17	TNS0062	Barrel Nipple
18	GQ0010	1" Pneumatic Valve
19	GWG0026	1" Internal Threaded Elbow
20	TW0074	Steam Hose
21	SXJ0013	Air Balance Hose
22	GWG0005	Steam Pipe Elbow

# 电器箱/Electric Box



序号 No	零件编码 Part No	Part Name
1	TD0287	Breaker

2	TD0271	Voltage convertor
3	TD0097	Power supply
4	TD0260	Breaker
5	TD0006	Fuse
6	TD0004	Relay
7	YDN0078	Controller
8	SDB0006	Inverter
9	GZ0002	Magnetic valve
10	TD0087	AC contactor
11	GQ0045	Two-position five-way valve