

悬浮式水洗衣机零件手册

自助及非自助

Part Manual for
Soft-Mount Washer-Extractor
Vend & OPL
(20 KG)

OASIS[®]

济南绿洲清洗设备有限公

Jinan Oasis Dry-cleaning & Laundry Equipment

编号/Number: SL20CNEN

发布日期/Release Date: 2024/12

前言

- ✧ 在更换烘干机零部件的时候，必须使用原装的或完全相同的零件。在保养或者替换零件以后，请按照洗衣机原来的方式紧固所有的面板部件，并且将本手册存放在安全的地方，以便日后参考。
- ✧ 当与经销商或者生产商联系的时候，请告知烘干机的确切类型、型号和序列号。洗衣机的类型、型号和序列号在洗衣机的铭牌上可以找到。
- ✧ 生产商有在任何时候修改本手册中任何参数，而不提前通知的权力。本手册所提及的数据参数和图示仅做参考。请注意，本手册只能提供一般的信息，因为本手册不可能非常完整的包含机器一切的信息。

Preface

- ✧ When replacing dryer spare parts, original or identical parts must be used. After maintenance or replacing parts, please tighten all parts as they were originally on the dryer, and store this manual in a safe place for future reference.
- ✧ When contacting the dealer or manufacturer, please provide the exact type, model, and serial number of the dryer. The type, model, and serial number of the dryer can be found on the nameplate.
- ✧ The manufacturer reserves the right to modify any parameters in this manual at any time without prior notice. The data and illustrations mentioned in this manual are for reference only. Please note that this manual can only provide general information, as it is not possible for this manual to include all details about the machine.

本手册适用于一下型号

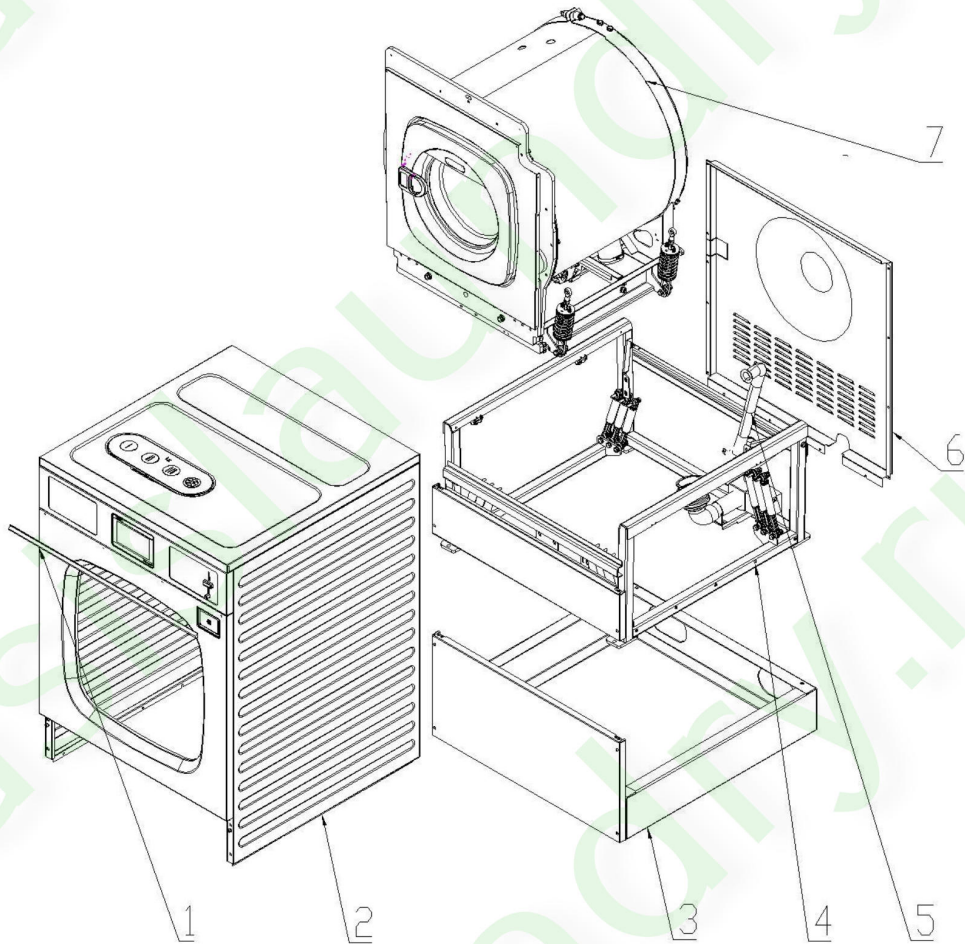
This manual for following models

SXTP200F

目录 Index

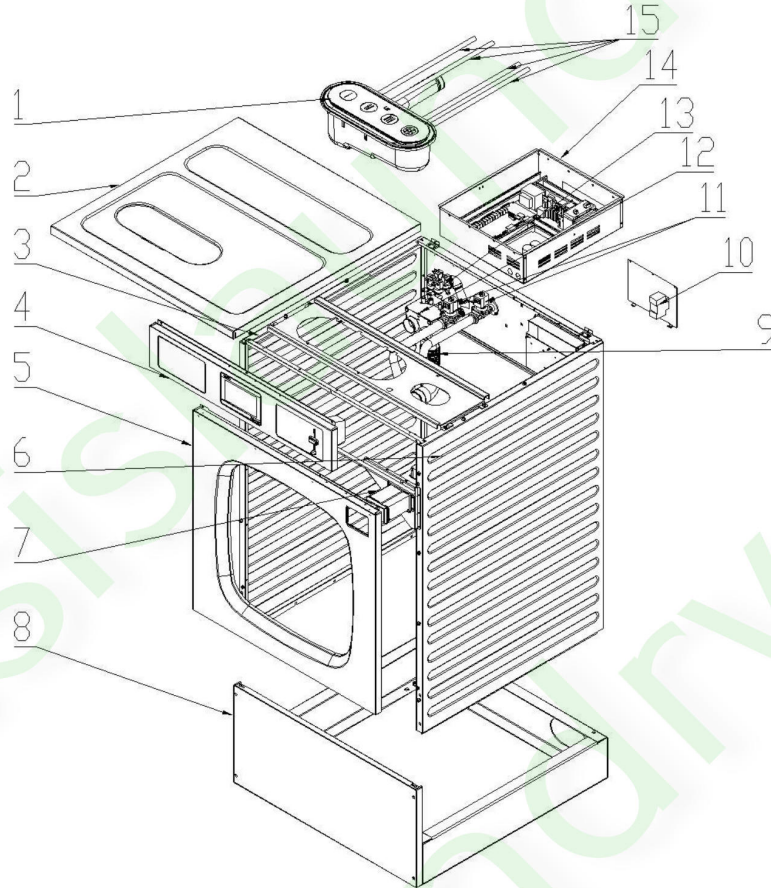
整机装配/Overall Assembly	3
箱体装配/Cabinet Assembly	4
控制面板装配/Controller Assembly	6
装载门组件/Loading Door Assembly	7
皂剂盒组件/Soapbox Assembly	9
电器箱/Electric Box	10
外筒及传动装配/Out Tub and Drive Assembly	11
电机装配/Motor Assembly	14
内筒装配/Bracket Assembly	15
弹簧装配/Spring Assembly	16
门锁装配/Door Lock Assembly	17
底座装配/Base Assembly	19
水管/Water pipe	20
蒸汽管路/Steam pipe	22
零件订购/Ordering Parts	23
声明/Statement	23

整机装配/Overall Assembly



序号 NO	零件编码 Part No	Part Name
1	ZS0477	Decoration bar
2		Cabinet Assembly
3	SX20F0028	Base frame
4		Base assembly
5	SXJ0167	Overflow pipe
6	SX20F0014	Back panel
7		Out tub

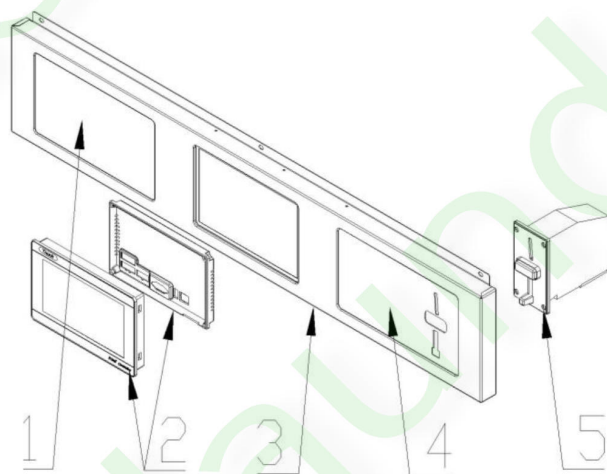
箱体装配/Cabinet Assembly



序号 NO	零件编码 Part No	Part Name
1	S0033	Soap box assembly
2	SX20F0017	Top panel
3	SX20F0010	Left panel
4		Control panel assembly
5	SX20F0012	Front up panel
6	SX20F0011	Right panel

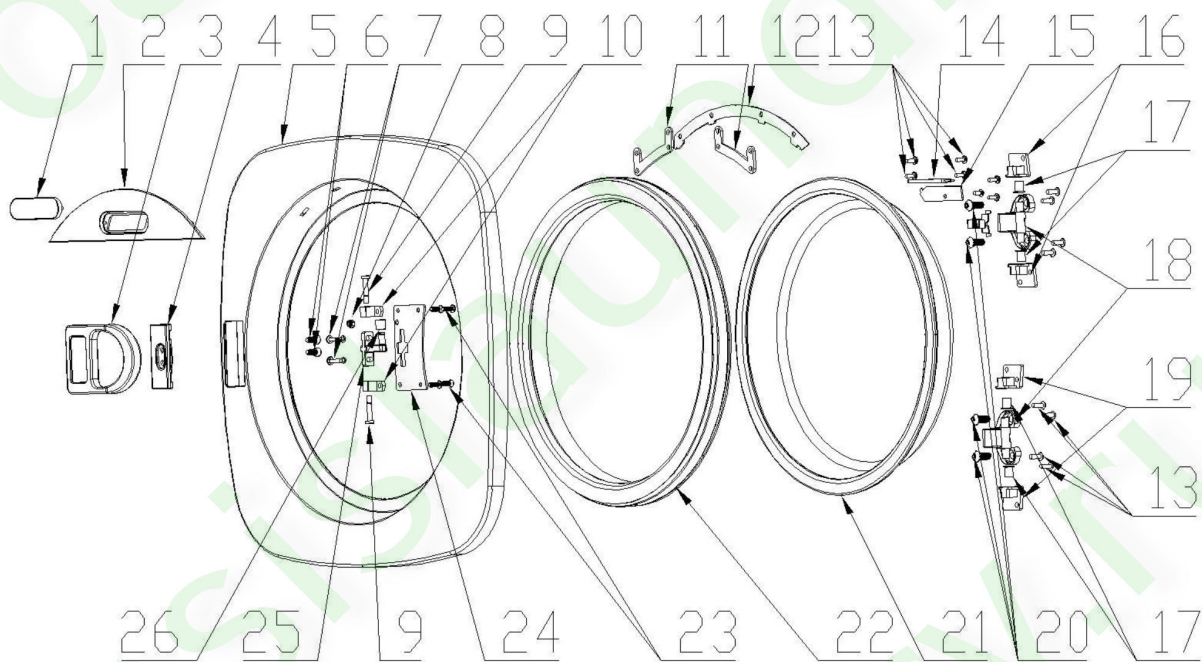
7		Money box
8	SX20F0030	Base frame
9	SXJ0040	Air release pipe
10	TD929	Breaker
11	GQ0030	Electronic water inlet valve
12	S0023	External soap box cover
13	WF0029	Electronic soap valve
14		Electric box
15	YXJ0167	Water inlet pipe

控制面板装配/Controller Assembly



序号 No	零件编码 Part No.	Part Name
1	M0126	Decal
2	YDN0077	7" Screen
3	SX20F0023	Control board
4	M0126	Decal
5	TW0205	Money drop

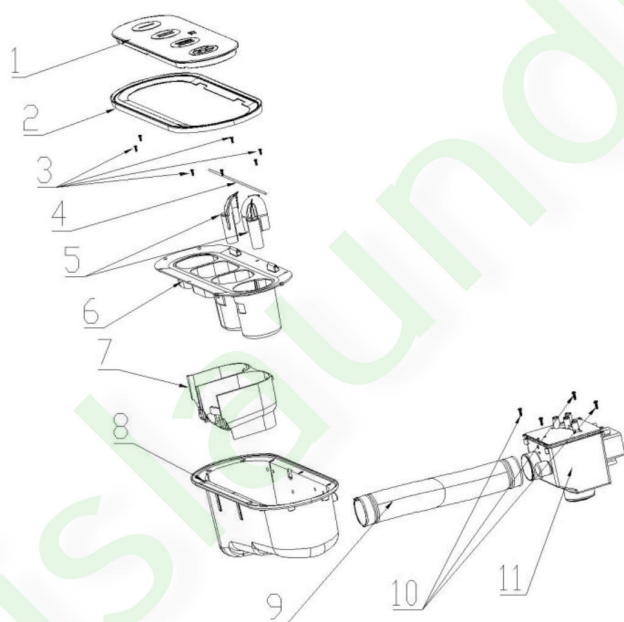
装载门组件/Loading Door Assembly



序号 No	零件编码 Part No.	Part Name
1	S0089	Brand logo
2	SX20B-0001	Logo plate
3	ZLMY0069	Door handle
4	S150037	Handle support
5	ZS0225	Door frame
6	BL0038	Screw
7	BL0613	Bolt
8	BL0152	Nut
9	S150040	Door pin
10	S150038	Door pin support

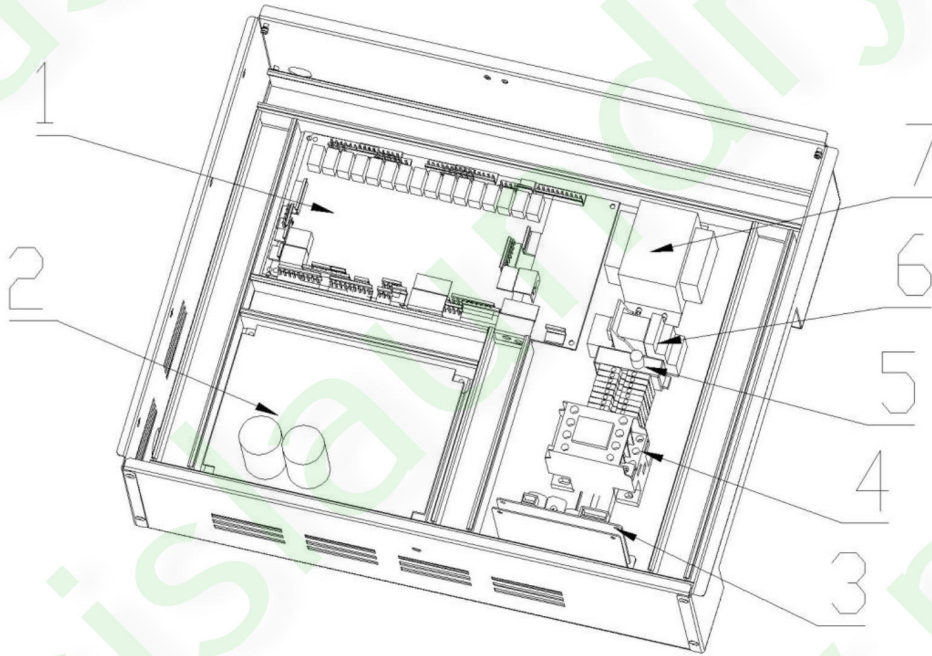
11	SX20F0006	Logo plate holder
12	SX20F0007	Press plate
13	BL0256	Screw
14	TD0274	LED light
15	SX15F0022	Light wire cover
16	S150065	Hinge upper cover
17	TW0880	Self-lubricated piece
18	ZS0234	Hinge
19	S150066	Hinge low cover
20	BL0825	Screw
21	TW0702	Door glass
22	YXJ0339	Door seal
23	BL0476	Screw
24	SX20F0009	Door hook press
25	S150039	Door hook
26	S150041	Door lock piece

皂剂盒组件/Soapbox Assembly



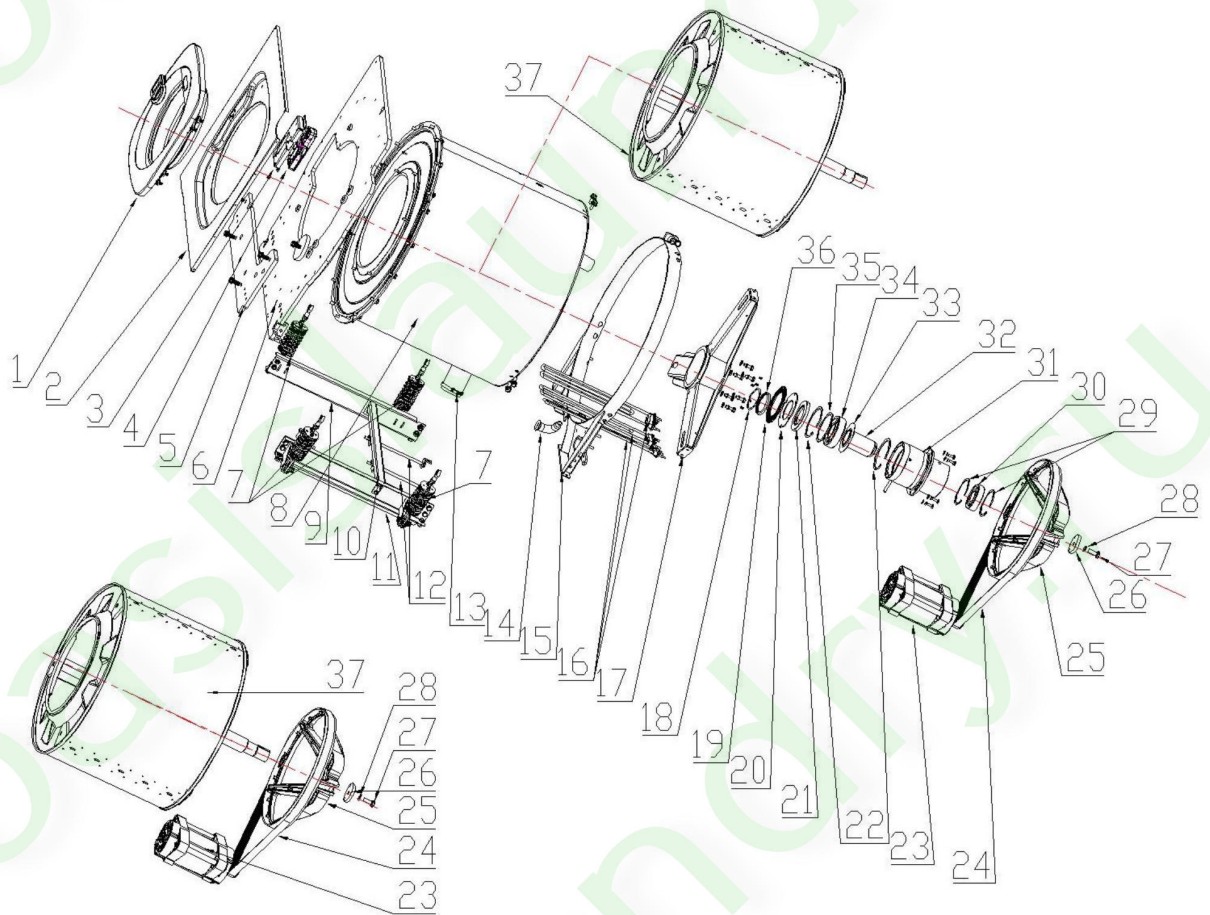
序号 No	零件编码 Part No.	Part Name
1	S0013	Soap box cover
2	SXJ0076	Soap box seal
3	BL0302	screw
4	S150029	Rotate shaft
5	S0117	Siphon tube
6	S0084	Soap compartment
7	S0083	Divider
8	S0033	Outer case
9	SXJ0027	Water outlet
10	BL0301	Screw
11	S0023	Back soap box

电器箱/Electric Box



序号 No	零件编码 Part No.	Part Name
1	YDN0077	7" control screen
2	SDB0001	Inverter
3	YDN0028	Door lock board
4	TD0008	AC contactor
5	YDN0028	Door lock board
6	TD0004	Relay
7	TD0271	Voltage converter

外筒及传动装配/Out Tub and Drive Assembly

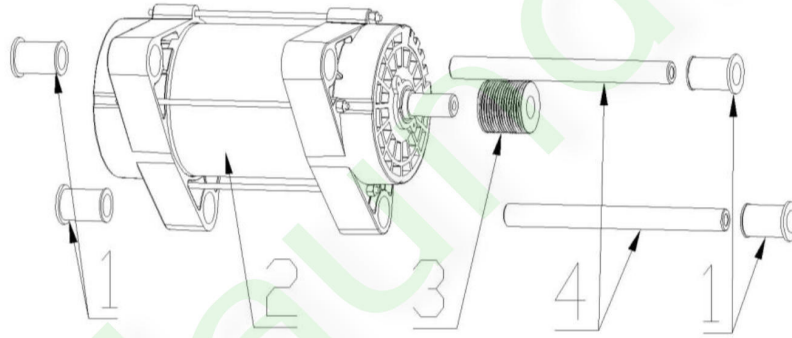


序号 No	零件编码 Part No.	Part Name
1		Door assembly
2	SX20F0018	Front plate
3	SX20F0005	Door lock support

4		Door lock assembly
5	SX20F0031	Front counterweight
6	HJCX00223	Front big plate
7		Suspension spring assembly
8	HJCX00061	Out tub
9	SX20F0032	Left support
10	SX20F0019	Motor front support
11	SX20F0033	Right support
12	S150048	Bolt (motor bar)
13	TW0096	SS cuff
14	SXJ0168	Water level tube
15	HJCX00036	Back support
16	A0008	Electric heating element
17	S100026	Cross piece
18	XY0039	Water seal
19	YXJ0306	Tub back rubber cover
20	SX180010	Bearing house seal plate
21	XY0009	Nitril seal
22	TW0089	Bearing stop
23	SDJ0050	Inverter motor
24	XP0130	Belt
25	SX25B014	Big pully
26	SX25C010	Pully press
27	BL0311	Spring
28	BL0519	Bolt
29	TW0049	Bearing stop
30	WC0144	Bearing
31	ZS0357	Bearing house

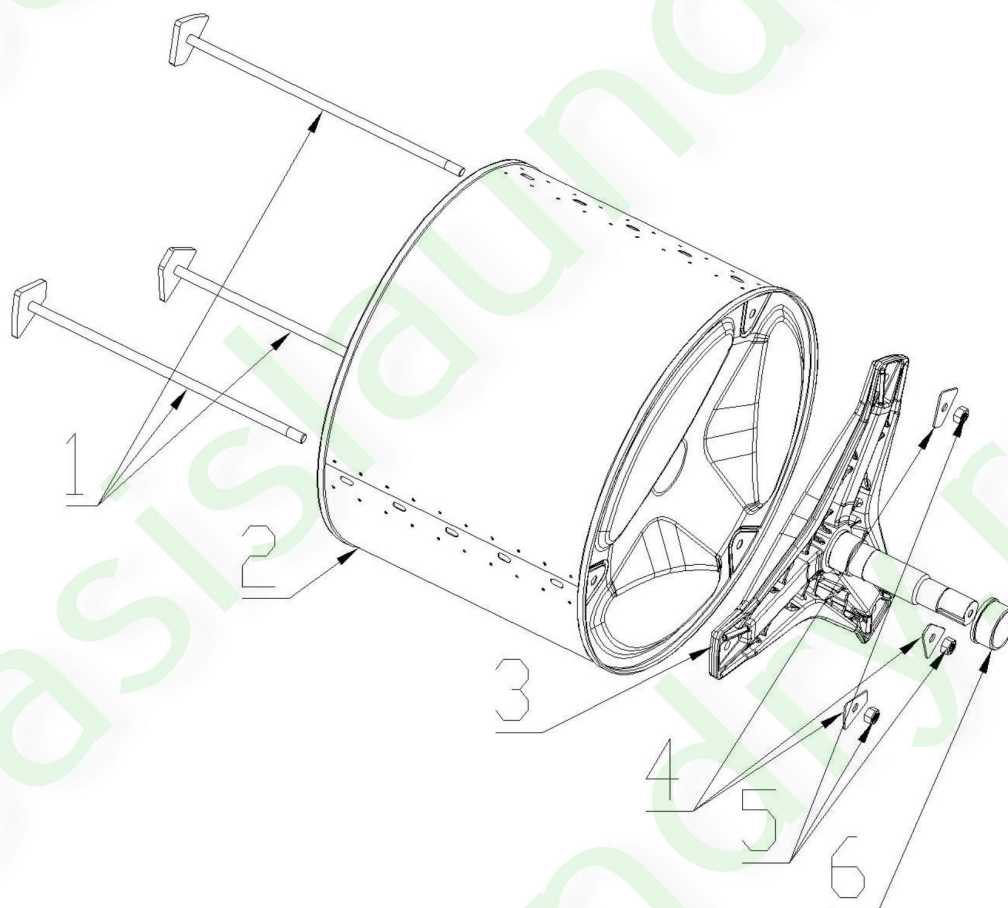
32	SX18004	Bearing inner sleeve
33	SX180011	Bearing oil stop
34	TW0364	Bearing
35	SX180012	Bearing house press plate
36	SX20F0034	V shape adjustment plate
37		Inner basket

电机装配/Motor Assembly



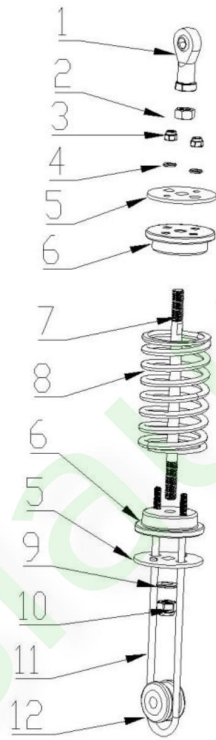
序号 No	零件编码 Part No.	Part Name
1	SXJ0067	Motor support
2	SDJ0050	Motor
3	ZS0382	Motor pully
4	S150035	Motor support

内筒装配/ Bucket Assembly



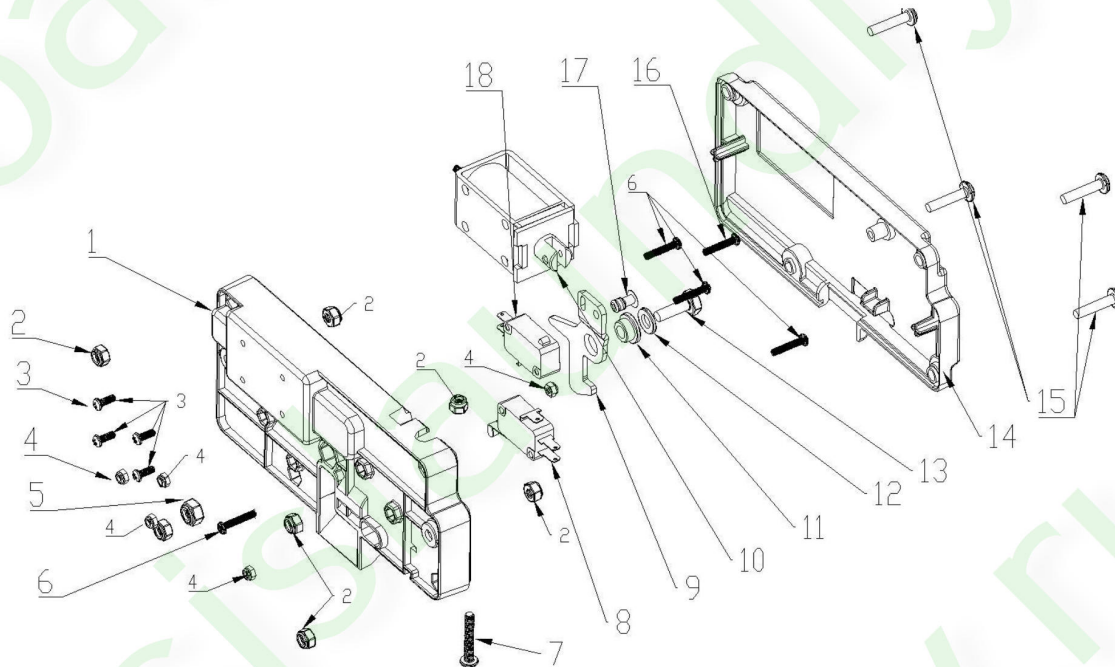
序号 No	零件编码 Part No.	Part Name
1	S100027	Basket bar
2	HJXC00259	Basket
3	S180001	Cross piece
4	SG180027	Basket bar back kit
5	BL0673	Bolt
6	S18002	Seal sleeve

弹簧装配/Spring Assembly



序号 No	零件编码 Part No.	Part Name
1	TW0697	Bearing
2	BL0003	Nut
3	BL0151	Nut
4	BL0046	Plate
5	SX20F0035	Plate
6	S0152	Spring holder
7	ZS0127	Adjustment bar
8	TW0713	Spring
9	BL0348	Washer
10	BL0144	Nut
11	ZS0126	U bar
12	S100025	Roller

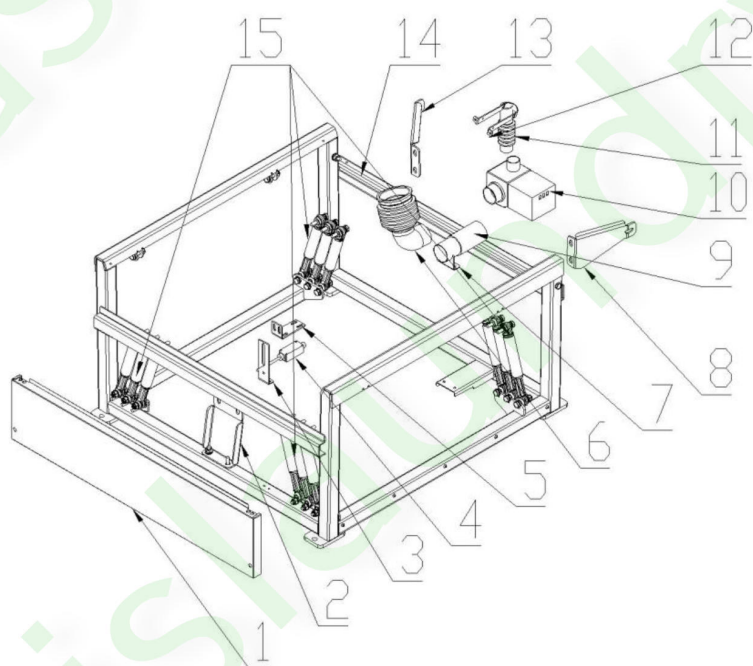
门锁装配/Door Lock Assembly



序号 No	零件编码 Part No.	Part Name
1	S0135	Lock lower case
2	BL0152	Nut
3	BL0559	Bolt
4	BL0145	Nut
5	BL0151	nut
6	BL0652	Bolt
7	BL0307	Screw
8	TD663	Micro switch
9	SX30G0024	Lock hook

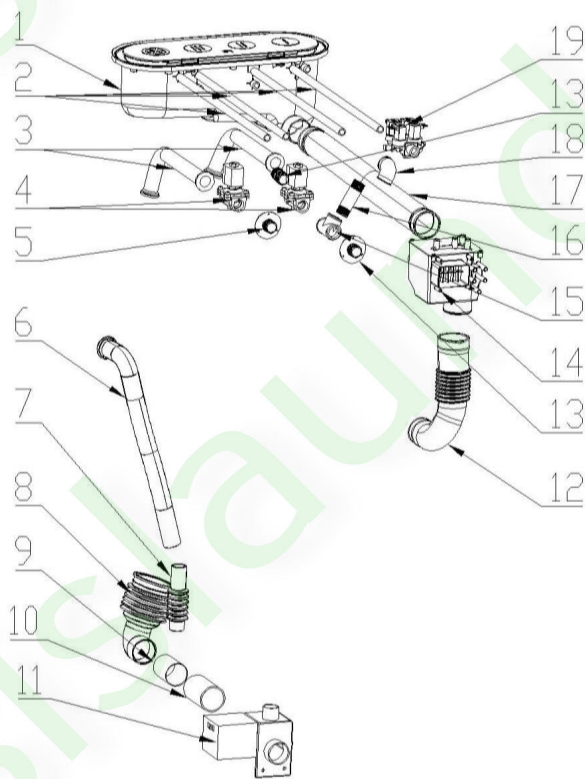
10	TW0705	Megnatic
11	ZS0353	Door lock washer
12	BL0046	Flat washer
13	BL0104	Blot
14	S0136	Lock upper cover
15	BL0613	Bolt
16	BL0747	Bolt
17	L0237	Rivet
18	TD662	Micro switch

底座装配/Base Assembly



序号 No	零件编码 Part No.	Part Name
1	SX20F0013	Base front
2	SX20F0029	Front shipping kits
3	SX20F0001	Balance position kit
4	TD0103	Balance switch
5	SX20F0002	Switch holder
6	YXJ0268	Flexible drain pipe
7	SX20F0027	Drain valve support
8	SX20F0026	Rear shipping kits
9	SXJ0050	Drain pipe connection
10	GQ0060	Electronic drain valve
11	GXJ0095	Rubber pipe
12	SX20F0004	Overflow pipe support
13	SX20F0025	Rear shipping kits
14	HJCX00149	Base frame
15	TW0770	Shock absorber

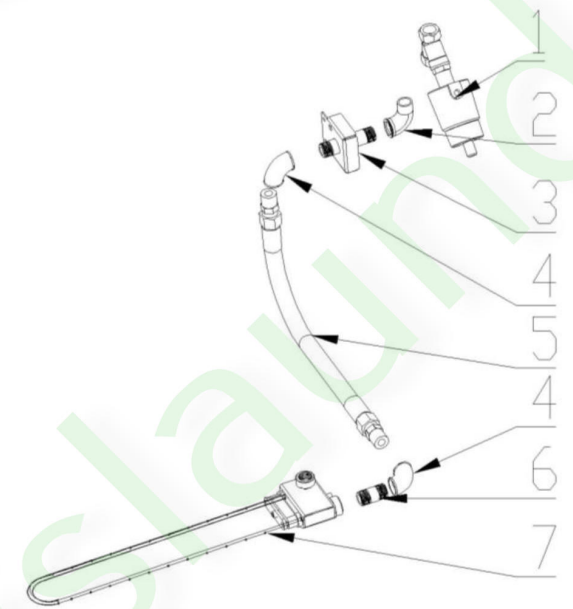
水管/Water pipe



序号 No	零件编码 Part No.	Part Name
1	S0033	Internal soap box
2	WF0029	Electronic soap Valve
3	SXJ0040	Air release pipe
4	GQ0030	Electronic water valve
5	DXG003	Screw couple
6	SXJ0167	Overflow pipe
7	YXJ0368	Rubber pipe
8	YXJ0268	Tub flexible water pipe
9	SX20F0027	Drain valve support
10	SXJ0050	Drain pipe

11	GQ0060	Electronic drain valve
12	YXJ0263	External soap water pipe
13	DXG001	Screw couple
14	S0023	External soap box cover
15	GWG0045	T connector
16	DXG009	Screw couple
17	SXJ0027	Internal soap water pipe
18	GWG0047	Elbo
19	WF0029	Electronic soap valve

蒸汽管/Steam Pipe



序号 No	零件编码 Part No.	Part Name
1	GQ0007	Pneumatic steam valve
2	GWG0062	Elbo
3	S100024	Steam valve support
4	GWG0044	Elbo
5	TW0065	Steam pipe and connection
6	BXG012	Connector
7	S150050	Steam Injector